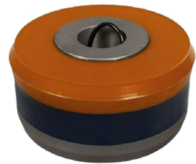




# MUD PUMP PISTONS

Outstanding performance in the most challenging conditions

## TECHNICAL SPECIFICATION DATA



### Bull Nose Extreme Piston

- Wide Temperature Range, -20°F to 350°F, 7500 psi.
- Fully compatible with all types of drilling and mud during any point of the drilling process.
- "Bull nose" lip design provides better sealing to reduce flush system contamination.

Pressure Rate	Temperature Rate	Suitable Muds	Remarks
7,500 psi	350°F	All based muds	Enhanced piston running life with a proprietary blend of lubricating agents. Compatible with existing piston rods.

Size	Part number
5"	A-UB-50-3-HT
5-1/4"	A-UB-52-3-HT
5-1/2"	A-UB-54-3-HT
5-3/4"	A-UB-56-3-HT
6"	A-UB-60-3-HT
6-1/4"	A-UB-62-3-HT
6-1/2"	A-UB-64-3-HT
6-3/4"	A-UB-66-3-HT
7"	A-UB-70-3-HT



### High Temp. Urethane Bonded Piston

- Increased run times up to 7500 PSI.
- Reduced cost per operating hour and consistent run times.
- Reduced maintenance and downtime.
- Flex Lip design for decreased liner wear.

Pressure Rate	Temperature Rate	Suitable Muds	Remarks
7,500 psi	325°F	All based muds	Excellent chemical and abrasion resistance in the most demanding well conditions

Size	Part number
4"	A-LLU-40-B15-HT
4-1/2"	A-LLU-44-B15-HT
5"	A-LLU-50-B15-HT
5-1/2"	A-LLU-54-B15-HT
6"	A-LLU-60-B15-HT
6-1/4"	A-LLU-62-L15-HT
6-1/2"	A-LLU-64-L15-HT
6-3/4"	A-LLU-66-L15-HT
7"	A-LLU-70-L15-HT

Connect with our expert team today!

[CONTACT US >](#)

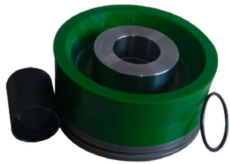




# MUD PUMP PISTONS

Outstanding performance in the most challenging conditions

## TECHNICAL DATA SHEET

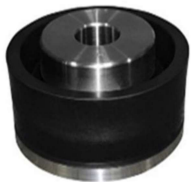


### Urethane Bonded Piston

- Temperature resistance up to 180°F.
- Operating pressure up to 5,000 PSI.
- Optimum performance in oil or synthetic base mud.
- Flex Lip design for decreased liner wear.

Pressure Rate	Temperature Rate	Suitable Muds	Remarks
5,000 psi	180°F	Oil / Water based mud	Excellent chemical and abrasion resistance

Size	Part number
4"	A-LLU-40-B15
4-1/2"	A-LLU-44-B15
5"	A-LLU-50-B15
5-1/2"	A-LLU-54-B15
6-1/4"	A-LLU-62-L15
6-1/2"	A-LLU-64-L15
6-3/4"	A-LLU-66-L15
7"	A-LLU-70-L15
8"	A-LLU-80-L15



### Rubber Bonded Piston

- High tensile strength.
- Best in water-based muds.
- Designed for high temperature and pressure service.
- Excellent chemical and abrasion resistance in the most demanding conditions.
- Reduced operating costs in challenging operating environments.

Pressure Rate	Temperature Rate	Suitable Muds	Remarks
5,000 psi	200°F	Water / Synthetic based mud	Best in water based muds.

Size	Part number
5"	A-LL-50-B15
5-1/2"	A-LL-54-B15
6"	A-LL-60-B15
6-1/2"	A-LL-64-L15

Connect with our expert team today!

[CONTACT US >](#)





# MUD PUMP PISTONS

Outstanding performance in the most challenging conditions

## TECHNICAL SPECIFICATION DATA



### Replaceable Rubber Piston

- High tensile strength.
- Designed for high temperature and pressure service.
- Suitable for water and synthetic based muds.
- Reduced operating costs in challenging operating environments.

Pressure Rate	Temperature Rate	Suitable Muds	Remarks
5,000 psi	200°F	Water / Synthetic based mud	Excellent chemical and abrasion resistance.

Series L	Part number
6-1/2"	A-I-62-L15
6-3/2"	A-I-64-L15
6-3/4"	A-I-66-L15
7"	A-I-70-L15
7-1/2"	A-I-74-L15

Series A	Part number
5"	A-I-50-A10

Series K	Part number
3-1/2"	A-I-34-K10
3-1/2"	A-I-34-K15
4"	A-I-40-K10
4"	A-I-40-K15
4-1/2"	A-I-44-K10
4-1/2"	A-I-44-K15

Series B	Part number
4-1/2"	A-I-44-B15
5"	A-I-50-B10
5"	A-I-50-B15
5-1/2"	A-I-54-B10
5-1/2"	A-I-54-B15
5-3/4"	A-I-56-B15
6"	A-I-60-B10
6"	A-I-60-B15

### Piston Comparison Chart

Rated for all drilling operations

	Piston	Rubber	Replaceable Rubber	Urethane	High-temp urethane	Bull nose extreme
Max pressure		5,000 psi	5,000 psi	5,000 psi	7,500 psi	7,500 psi
Max temperature		200 °F	200 ° F	180 °F	325 °F	350°F
Suitable for		Water & synthetic	Water & synthetic	Oil & water	All based muds	All based muds
Size		5" to 6-1/2"	3-1/2" to 7-1/2" (series are A, B, K and L)	4" to 8"	4' to 7"	5" to 7"

Connect with our expert team today!

[CONTACT US >](#)

