

PISTONS

Duo Piston



American Mud Pumps LLC
Houston, Tx. USA

**American
Mud Pumps**™



Corporate Office:

3050 Post Oak Blvd. Suite 510

Houston TX. 77056

Phone: +1 (713) 979-0534

Fax: +1 (713) 979-0533

customerservice@americanmudpumps.com

www.americanmudpumps.com

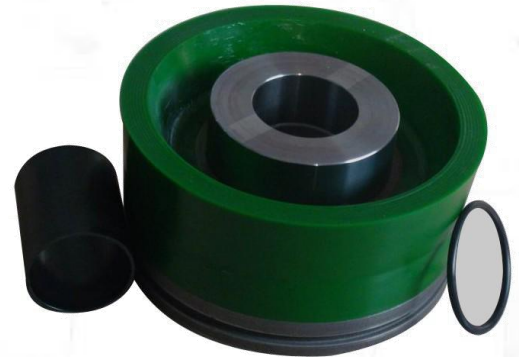
Duo Piston

American Mud Pumps Duo piston is recommended for systems with oil or synthetic based mud.

It is also recommended for water-based muds when weights are 11 lb/gal or over.

The Duo piston is not recommended for clear water or seawater pumping due to the lack of lubricity of these fluids.

As in all urethane pistons, the backflush requirement is recommended at 14 gal/min or greater for each piston.



- ✓ Temperature resistance up to 180°F (82°C)
- ✓ Operating pressure up to 6300 PSI
- ✓ Backflush requirement is 14 gal/min or greater for each piston
- ✓ Flex Lip design for decreased liner wear

	Pressure Rate	Temperature Rate	Suitable Muds	Remarks
Duo Piston	6300psi	Up to 180°F	oil or synthetic based mud	Not recommended for clear water or seawater pumping due to lack of lubricity of these fluids.

American Mud Pumps carries pistons in sizes from 3" through 8" for duplex and triplex mud pumps. Along with our bonded pistons, we also offer replaceable piston cups and piston kits which include the snap-ring and plate. Most of our Pistons are proudly manufactured in the USA.

SIZE	BORE HUB Ø SIZE	REPLACEABLE RUBBER PISTON ASSY	PISTON REPLACEMENT RUBBER KIT	BONDED RUBBER PISTON ASSY	SINGLE DUROMETER URETHANE BONDED	URETHANE BONDED HIGH TEMP.
4"	1 ½" & 1 5/8"	I-40-K15	A-40K-KIT	LL-40-K15	LLU-40-K15	LLU-40-K15-HT
4 ½"	1 ½" & 1 5/8"	I-44-B15	A-44B-KIT	LL-44-B15	LLU-44-B15	LLU-44-B15-HT
5"	1 ½" & 1 5/8"	I-50-B15	A-50B-KIT	LL-50-B15	LLU-50-B15	LLU-50-B15-HT
5 ½"	1 ½" & 1 5/8"	I-54-B15	A-54B-KIT	LL-54-B15	LLU-54-B15	LLU-54-B15-HT
5 ¾"	1 ½" & 1 5/8"	I-56-B15	A-56B-KIT	LL-56-B15	LLU-56-B15	LLU-56-B15-HT
6"	1 ½" & 1 5/8"	I-60-B15	A-60B-KIT	LL-60-B15	LLU-60-B15	LLU-60-B15-HT
6 ¼"	1 ½" & 1 5/8"	I-62-L15	A-62L-KIT	LL-62-L15	LLU-62-L15	LLU-62-L15-HT
6 ½"	1 ½" & 1 5/8"	I-64-L15	A-64L-KIT	LL-64-L15	LLU-64-L15	LLU-64-L15-HT
6 ¾"	1 ½" & 1 5/8"	I-66-L15	A-66L-KIT	LL-66-L15	LLU-66-L15	LLU-66-L15-HT
7"	1 ½" & 1 5/8"	I-70-L15	A-70L-KIT	LL-70-L15	LLU-70-L15	LLU-70-L15-HT

PISTON RODS, EXTENSION RODS & ACCESSORIES

PART NO.	DIAMETER	PISTON ROD	EXTENSION ROD	ROD CLAMP	SUB ROD	PISTON ROD NUT
	1 5/8"	A-1295147	A-1295083	A-1295085	A-1295146	A-50V14

GASKET

VALVE COVER GASKET	A-1540163	CYLINDER HEAD GASKET	-
--------------------	-----------	----------------------	---

Some of our supported brands include:

NATIONAL, EMSCO, GARDNER DENVER, OILWELL, LEWCO, IDECO T, OPI, BOMCO, LS, IDECO MM, SKYTOP BREWSTER, ELLIS WILLIAMS, WEATHERFORD, WILSON, WORKFORCE, GASO

Warranty:

American Mud Pumps LLC: warrants its products to be free from defects in material and/or workmanship under normal use and service for a period of one (1) year from the date of shipment. The liability for any defects shall be limited to the repair or replacement of such products, or at the option of American Mud Pumps LLC the refunding of purchase price. This warranty is expressly in lieu of all other warranties and representations, expressed or implied, and all other obligations or liabilities on the part of American Mud Pumps LLC, which shall not be liable for consequential damages for any breach of warranty."

Disclaimers.

American Mud Pumps LLC is a quality independent company. We are neither a licensee, nor affiliated with any other original equipment manufacturer (OEM) which may be named throughout. The manufacturers' names or trademarks used herein are solely for identification purposes and are not intended by American Mud Pumps LLC to cause confusion as to the source, sponsorship or quality of the parts provided by American Mud Pumps LLC. The OEMs named throughout this catalog do not sponsor, promote, warranty or endorse American Mud Pumps LLC products. Part number usage is for identification purposes only."