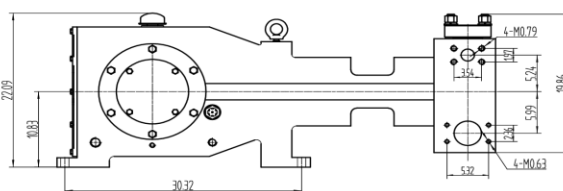
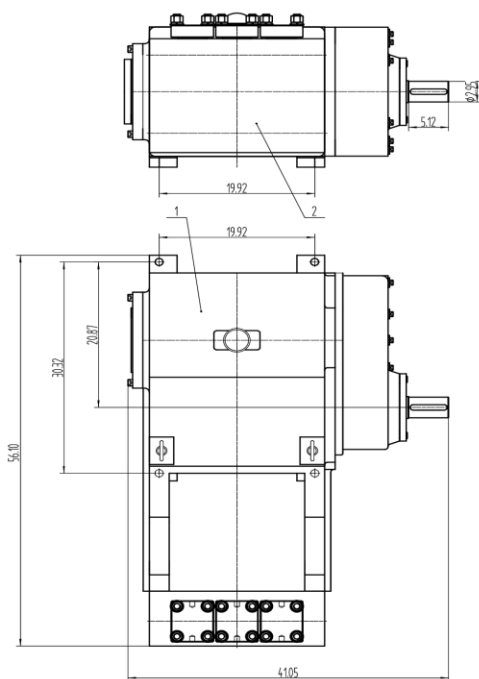


Industrial Plunger Pumps

TRIPLEX

AT-100M (27.30~121.84 GPM)



Technical specification data

Maximum input horsepower rating	160.11
Maximum strokes per minute	387
SPM for continuous duty	350
Stroke length	3.94"
Maximum plunger size	2.80"
Fluid end working pressure rating	5,141 Psi
Discharge connection size	≤ 2.25"
Suction connection size	≤ 3.75"
Crankcase oil capacity	9.19 Gallons
Standard gear ratio	4.45: 1
Optional gear ratio	3.82: 1
Pump weight complete (Less skid)	1,378 Lbs
Overall dimensions (L x W x H)	56.10" X 41.05" X 22.09"

Features

- Deliver high pressure with minimal energy consumption.
- Designed to handle extreme pressures while maintaining stable flow rates.
- Flexible design options to meet various application requirements.
- Compact pump package designs allow for easy installation in limited spaces.
- Pumps can be configured to handle harsh or abrasive media like saline water, chemical fluids, or radioactive liquids with appropriate material selection.
- Engineered for quiet operation.

AT-100M 3.94" Stroke Triplex		Strokes Per Min.	222	259	333	387
		Input HP*	918.5	1071.5	137.77	160.11
Plunger Size	Nominal Pressure (PSI)	Output Gal/Rev	Output - Gallons Per Minute**			
2.80"	2,008.31	0.315	69.89	81.54	104.84	121.84
2.75"	2,082.01	0.304	67.42	78.66	101.13	117.53
2.50"	2,519.23	0.251	55.72	65.00	83.58	97.13
2.25"	3,110.16	0.203	45.13	52.65	67.70	78.68
2.00"	3,936.29	0.161	35.66	41.60	53.49	62.16
1.75"	5,141.28	0.123	27.30	31.85	40.95	47.59

*Based on 87.4% mechanical efficiency, **Based on 100% volumetric efficiency.